

REED SWITCH MKA-36201

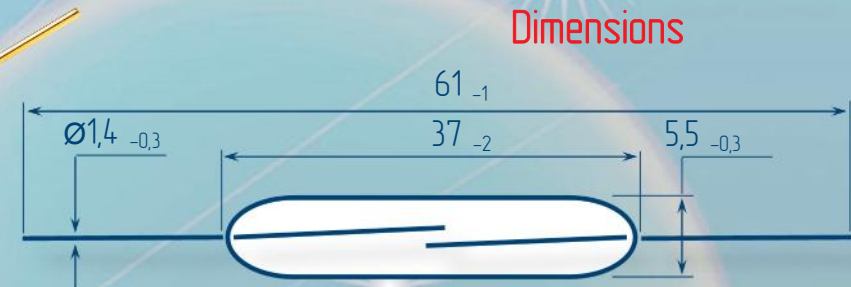
CONTACT FORM A NORMALLY OPEN CONTACTS

Switching current 3 A

Switching power 250 W, VA

Switching voltage 250 V

Pull in range 50...80 AT



Electrical Data

Release range, AT, min	18
Carry current, A	3
Breakdown voltage	
V, not less, AC/DC	350/500
Resetting Ratio	0,35...0,9
Contact resistance, Ω , not more	0,1
Operating time including bounce, ms, not more	2
Release time including bounce ms, not more	2
Capacitance, pF, not more	1
Insulation resistance, $G\Omega$ not less	1
Operating frequency, Hz	50
Switching current frequency, kHz, not more	10

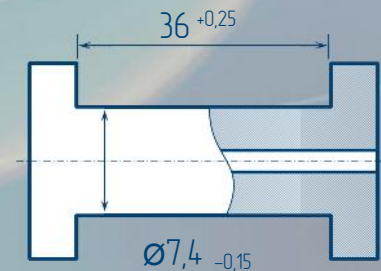
Environmental Data

Contact material	Mo
Life expectancy, switching cycles $\times 10^6$ max load power... low load power	0,01...1
Vibration (1...500 Hz) , g, not more	10
Resonant frequency, Hz	700
Shock (1 \pm 0,3) ms, g, not more	150
Weight, g, not more	1,8
Operating temperature, $^{\circ}C$	-60...125
Humidity, %, not more	98

Certificates



Test Coil



5000 turns, wire $\varnothing 0,1$ mm
coil resistance 327 Ω

Order information

Delivery of reed switches with formed and/or cropped leads and with narrow pull in ranges is available by agreements.



RYAZAN METAL CERAMICS INSTRUMENTATION PLANT, JSC
51V, Novaya St., 390027, Ryazan, Russia
Phone: +7 (4912) 240-234, Факс: +7 (4912) 240-234 E-mail: oves@rmcip.ru

Update on 19 March 2014

